



LEDStormTM

Advanced LED Technology • Customer-Driven Solutions



LEDStorm™

Corporate Brochure

LEDStorm™ Introduction **0.0**
Resumes **0.1**

Film Production **1.0**

LS-711 & LS-69 On-Camera Light **1.1**
PL-11 & PL-6 Panel Light **1.3**
PL-11 PAR & PL-6 PAR **1.5**
FlexiLED kit **1.6**
MiniSource **1.7**
New Arrivals **1.8**

Commercial Lighting **2.0**

Commercial **2.1**
Quick List **2.3**

LEDTherapy **3.0**

Advanced Light Therapy **3.1**
Treatments Covered **3.2**
How It Works **3.3**

LEDGrow **4.0**

LED Grow Lights **4.1**

LEDStorm™ Accolades **5.0**



The story of **LEDStorm**'s revolutionary LED lighting systems has its roots in the entertainment industry.

The company was founded in 2007 in Cambridge, Massachusetts, by the partnership of Scott Gordon (CEO and Founder/Inventor), a graduate of Boston University with 20 years of lighting experience from the film and video industry (IATSE 477) and Michael Short (Co-founder/Inventor), a nuclear engineer from MIT who brought an innovative approach to electrical engineering. With the assistance of MIT's media lab, "hobby shop" facilities and mentoring program,

LEDStorm produced its first entertainment industry lighting instrument in 2008 and soon commercially deployed an array of cutting-edge lighting devices for the film, television and music industries to wide professional acclaim.



Scott L. Gordon

**LEDStorm Chief Executive & Chief Technology Officer
Visual Media Producer/Director/Writer/Lighting Technician**

Scott Gordon is the co-founder, inventor and leader of LEDStorm, an LED technology solutions firm incubated at MIT with its origins in the demanding film/video industry. Without question, lighting requirements for the visual media production industry are the most demanding, rigorous and sophisticated in the world. Scott Gordon, with twenty years of hands-on film, video, stage and advertising lighting experience, succeeded in creating a wide range of innovative, super-efficient LED products for the entertainment industry that has become a continuous stream of cost-competitive, user-customizable lighting products for a variety of other business and government sectors – including healthcare, agricultural, manufacturing, retailing, municipal, amusements, defense and transportation. With co-inventor Dr. Michael Short, a materials science and engineering expert at MIT, he created an array of durable, flexible, power-conserving and very affordable “plug and play” modular components and user-friendly controls that are manufactured in the USA and distributed worldwide. LEDStorm has even adapted its lighting systems for the most extreme physical environments, including undersea, desert and Antarctic conditions.

Scott L. Gordon - continued

LEDStorm products are designed to meet virtually any customer-defined lighting challenge – large or small. Leveraging his extensive professional experience in the film and television industries, Scott studied and worked with virtually every type of lighting fixture, software control system and power supply available to commercial lighting experts. Since its founding in 2008, as a result of extensive product research and development at MIT, LEDStorm has seamlessly incorporated innovative, functional, aesthetically pleasing designs with commercially proven components into all of its product lines. Scott uses only the highest quality electronic components manufactured, assembled and tested in the USA. LEDStorm integrates versatile yet intuitive software and firmware control systems with its diverse library of modular components – and offers customers a 5-year full replacement warranty. The synergy of Scott’s film industry experience and LED product development resulted in a complete line of street and supermarket lighting fixtures and retrofit components that offer his clients custom, fully warranted, American-made lighting solutions that are very cost-competitive with lower quality, mass-produced, “off the shelf” LED products from Asia.

Scott received his Bachelor of Science degree in Broadcasting and Film in 1987 from the College of Communications at Boston University. Having worked professionally in every facet in the film industry over the past twenty years, he has a wealth of production experience. As a member of the Union IATSE, local 477, Scott has done technical work on 48 feature Hollywood films (including The Truman Show, Analyze This, 2 Fast-2 Furious, Bad Boys I & II, Transporter 2, After the Sunset, Miami Vice, Away We Go and many others) as one of the following: Key Grip, Best Boy Grip, Rigging Grip, Gaffer, Rigging Electric, Dolly Grip, Grip, Electrician, and Set Dresser. He Scott L. Gordon has worked on 20 television series (including CSI-Miami, The Sopranos, South Beach, The OC, Days of our Lives, The Fugitive, and Baseball Wives), 65 music videos, and more than 150 commercials for some of the world’s largest companies (including Budweiser, McDonald’s, Toyota, Volvo, VW, Chevrolet and Pepsi). He has directed, written, served as photography director, camera man or coordinator for a wide variety of visual media projects.

Scott L. Gordon - continued

Scott also has been involved in many independent film productions, documentaries and video projects as a producer (Anatomy of an Activist, Get Fit Crew, Tom Dowd and the Language of Music, Fauno). As Producer of the award-winning feature documentary, Tom Dowd and the Language of Music (Official Selection for Sundance Film Festival and Toronto Film Festival), he was nominated for a Grammy.

Scott now devotes all of his time and energy to serving as LEDStorm's Chief Executive and Chief Technology Officer. With the business positioned for exponential growth, he is assembling a multi-disciplinary business team to handle daily operations, marketing and manufacturing, allowing him to focus on product research, special projects and development of new LED applications. The business is planning to relocate its administrative and manufacturing facilities to the new Eco-Innovation Park in Kennebunk, Maine, in 2013.

References available upon request.



Michael Short, PhD
Professor & Research Scientist, MIT
Inventor & Co-founder, LEDStorm LLC

BS - Nuclear Science & Engineering MIT, 2005
BS - Materials Science & Engineering MIT, 2005
MS - Materials Science & Engineering MIT, 2010
PhD - Nuclear Science & Engineering MIT, 2010



LEDStorm™

Film & Video
Brochure

LEDStorm™ LS-711 & LS-69 On-Camera Ring Light (18-36volt) & (12volt).

The LS-711 & LS-69 LEDStorm™ On-Camera Lights are the perfect solutions for all “run and gun” camera work.



LS-711 On-Camera Ring Light

The LS-711, LEDStorm On-Camera Light, with its 7” inner diameter and 11” outer diameter, utilizes diodes with a 130° angle, which creates a more natural, wider spread of light allowing cinematographers, with no vignette, to shoot with their widest lenses.



Ring Light Camera Mount

Utilizing the versatile 10-piece Ultra Light bracket system, The LS-711 can be oriented anywhere on any camera system the operator desires. With its unique parabolic lens system, the LS-711 can also deliver surprisingly powerful output. Which allows the cinematographer the ability to shoot in full sun, with a throw up to 100 feet.



B-24 Control Ballast

Multi-function Control Box:

- LCD Display
- Can Produce any White Light Color Temperature
- Can Produce any Color in the Light Spectrum (RGBY)
- Total Frequency and Duty Cycle Control
- Seamless Dimming and Color Temperature Ramping
- Duration Control
- Manual Master Fader
- Kill Switch
- Daisy Chain

Visit our website for complete performance and technical data: www.LEDStorm.com

LEDStorm™ LS-711 & LS-69

On-Camera Ring Light (18-36volt) & (12volt).

The LS-711 & LS-69 LEDStorm™ On-Camera Lights are the perfect solutions for all “run and gun” camera work.

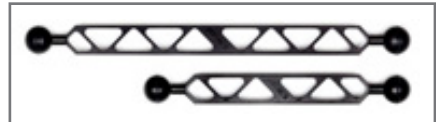


LS-711 Kit

Multi-function Control Box Continued:

- Preprogrammed Effects: Strobe, Chase Fade, Chase Jump, Old and New Style Police Lights, Firetruck, and Ambulance, Fire, Water, and Television
- Open Custom Channels allows the user to save custom settings
- Universal AC power input (110v-220v)
- 18-36 VDC Battery operation (8 hours or more with most 30v battery systems)

LS-711 Kit Includes:



- LS-711 On-Camera Light (11” Outer Diameter & 7” Inner Diameter)
- B24 Control Ballast (6”X 4” X 2)
- Battery Belt Power Cable (Fits Most 30/13V Battery Belts)
- (2 Pin LC30 or 3 Pin XLR to Female 4 Pin XLR)
- AC-DC Power Brick W/Cables, 24volt, 120 Watts (Edison T0 Female 4Pin XLR)
- 10 Piece Ultralight Bracket System
- 3 Piece Lens System
- Pelican 1560 Carry Case
- Kits Weight 18-20 lbs Depending On The Accessories

LS-711 Retail: \$4,600

LS-69 (12v) Mini Ring Light also available - **Retail: \$3,600**
(Includes the same accessories as the LS-711)

Visit our website for complete performance and technical data: www.LEDStorm.com

LEDStorm™ PL-11 & PL-6

Hand Held or Fixed (18-36volt) & (12volt).



PL-11

LEDStorm Panel Light, an 12" by 12" square panel, utilizing bulbs with a 130° angle, arranged in a unique spiral formation, allows cinematographers to shoot with their widest lenses. PL-11 is ideal as a "floating hand held light without feeling "sourcery". With its interchangeable parabolic lens system the PL-11 can range from 130° all the way down to 5°, increasing its intensity by 5 full stops and its throw up to 75 feet.



B-24 Control Ballast

Multi-function B-24 Control Ballast:

- LCD Display
- Can Produce any White Light Color Temperature
- Can Produce any Color in the Light Spectrum (RGBY)
- Total Frequency and Duty Cycle Control
- Seamless Dimming and Color Temperature Ramping
- Duration Control
- Manual Master Fader
- Kill Switch
- Daisy Chain
- Preprogrammed Effects: Strobe, Chase Fade, Chase Jump, Old and New Style Police Lights, Firetruck, and Ambulance, Fire, Water, and Television
- Open Custom Channels allows the user to save custom settings
- Universal AC power input (110v-220v)
- 18-36 VDC Battery operation (8 hours or more with most 30v battery systems)

Visit our website for complete performance and technical data: www.LEDStorm.com

LEDStorm™ PL-11 & PL-6

Hand Held or Fixed (18-36volt) & (12volt).



PL-11 with Barn Doors

PL-11 & PL-6 Kits Include:

- Fixture (with Yoke and Bail Block)
- 3 Piece lens set
- AC to DC power supply
- Battery cable
- Pelican 1560 carry case
- B-24 Control Ballast (6"X 4" X 2)

PL-11 & PL-6 Separate Accessories:

- Barn Doors (Set of 4)
- Header cables (10', 25' 50')
- Header cable jumper Female to Female.

PL-11 (12"x12") Retail: \$4,400

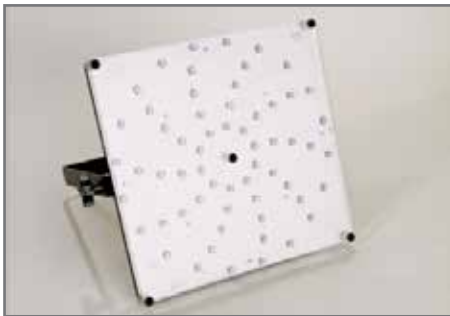
PL-6 12volt (6"x6") Panel Light also available - Retail: \$3,400
(Includes the same accessories as the PL-11)

Visit our website for complete performance and technical data: www.LEDStorm.com

LEDStorm™ PL-11 PAR (12"X12") & PL-6 PAR (6"x6") Hand Held or Fixed (18-36volt)



PL-11 PAR - with Barn Doors



PL-11 PAR

The PL-11 Par, LEDStorm 12"x12" Panel Light, is all about power. With less than 120 watts the PL-11 Par can rival most 1200 watt incandescent fixtures and 400-800 watt HMI fixtures, which has earned it the nickname "Master Blaster".

Light weight and superior battery operation makes the PL-11 Par an excellent "floating" hand held source.

PL-11 PAR & PL-6 PAR Kits Include:

- Fixture (with Yoke and Bail Block)
- 3 Piece lens set
- AC to DC power supply
- Battery cable
- Pelican 1560 carry case
- In-line Dimmer w/25' header cable

PL-11 PAR & PL-6 PAR Separate Accessories:

- Barn Doors (Set of 4)
- In-line Dimmer
- Header cables (10', 25' 50')
- Header cable jumper Female to Female.

PL-11 PAR 18-36volt (12"x12") Retail: \$2,250

PL-6 PAR 12v (6"x6") also available - Retail: \$1,700
(Includes the same accessories as the PL-11 PAR)

Visit our website for complete performance and technical data: www.LEDStorm.com

LEDStorm™ FlexiLED kit (9-18volt)

A powerful, Flexible and Portable Lighting Solution



FlexiLED Kit



Control Box

The FlexiLED kit includes 4 lightweight flexible fixtures that can be taped or pinned to just about any surface. Up to 3 fixtures can be run on a single ballast (12V cigarette car lighter), and have all the functions and effects that you have become familiar with in our other products.

However, with the FlexiLED system, these fixtures can simultaneously perform independent functions out of the same ballast. The FlexiLED kit is ideal for car rigging, tabletop, or just hiding light sources in those impossible small spaces.

The Kit includes:

- 4 Fixtures
6"x6" panel , 3"x3" panel , 2"x6" strip,
and 2"x4" strip
- 12VDC (9-18volt) Ballast,
- Control cables for all 4 fixtures
- AC power brick (110v/220v)
- Battery cable (LC30 to 4 pin XLR, or
your choice of pin-out)
- Male cigarette lighter adapter to female
4 pin XLR
- 25' Male 4 pin XLR to female 4 pin
XLR extension cable
- Male Cigarette lighter Adapter to fe-
male "Y" splitter adapter
- 25' Car Battery clips/jumpers to female
Cigarette lighter adapter

FlexiLED Kit Retail: \$5,000

Visit our website for complete performance and technical data: www.LEDStorm.com

LEDStorm™ Mini Source **(5600K Daylight)**

A powerful and Portable Lighting Solution



FlexiLED Kit



Mini Source lights used on the set of the reality show Protagonista.

LEDStorm Mini Source is the smallest fixture of the Master Blaster series is a very compact, lightweight fixture (size of a harmonica) with a remarkable throw and output. This small fixture (6"x1.5") is the ideal on camera light source. Using less than 10 watts can be plugged right into your camera's P-tap; can also be run on ac power, or other battery sources (battery belt). Just as our other products, the **LEDStorm Mini-Source** uses an interchangeable lens system that allows the fixture to be used in many different ways.

Mini Source Kit Includes:

- Fixture (12v, 5-10watts): w/lenses (5°, 30°) Tail with Female connector
- 10 watts 12volt AC/DC Edison to Male connector 10'-12' ft cable
- 6' male connector to Male P-Tap connector In-line dimmer w/power switch (input female output female)
- Male to Male turnaround
- Ultralight Adapter male 1/4" (AD-1420 w/Stud), Hot Shoe Adapter(AD-HS), 1-Knuckles (AC-CS)
- Carry Case (IM2100 Storm Case)

LEDStorm Mini Source Kit: \$775

Visit our website for complete performance and technical data: www.LEDStorm.com

LEDStorm™ New Arrivals

A quick introduction to some new products.



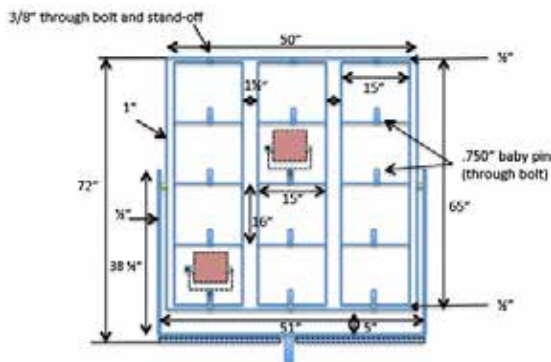
Instant Studio Control Ballast



LEDStorm Touchscreen LCD Monitor

The LEDStorm Instant Studio System: is ideal for studio lighting set ups in any location. The multi-control ballast system, can be plugged into any household 110v (110v-240v (20amp)) power outlet and can operate multiple LEDStorm fixtures (24vdc). LEDStorm's superior control system, operated locally or by remote (wireless), can control all the fixtures simultaneously, individually, or any number of selected fixtures the operator desires.

The LEDStorm Instant Studio System is Currently in operation at ESPN Headquarters, The Campus Bristol, CT.



LEDbrut Frame

The LEDStorm LEDbrut: is an extremely versatile lighting fixture. The LEDStorm LEDBrut, utilizing the PL11 Par (Master Blaster) fixtures, with a fraction of the power requirements, makes an excellent lightweight alternative to the traditional 12 Light Maxi-Brute fixture. The LEDStorm LEDBrut will only use a maximum of 2000 watts as opposed to the 12,000 watts used by the 12 Light Maxi-Brut. This system can also be easily adapted into a studio set-up. The multi-control ballast system, can be plugged into any household 110v (110v-240v (20amp)) power outlet and can operate up to 12 PL-11/PL-6 (panel) fixtures (24vdc). Uses the same controller as the LEDStorm Instant Studio System.



LEDStorm™

Commercial Lighting
Brochure

LEDStorm™ Commercial Lighting Solutions

The powerful, cost-saving, alternative lighting solution.

Save 50% - 85% or more in power & maintenance costs.



LED Ceiling Retro Fit



Eyeball High-Hat Retro Fit



LED Acorn Street Light Retro Fit

Capitalizing on the reputation of our film and video products and our continuous stream of new custom solutions, we have a growing repertory of innovative LED modules that we can mix and match. We can retrofit any lighting appliance with LEDs that consume far less power and deliver more lumens than other light fixtures - including LEDs. High wattage street lights can be cost-effectively retrofitted to achieve the same or higher light output with far less electricity. Simple controls can allow end users to change lighting direction, intensities and colors.

We are launching an on-line **LEDStorm** LED Retrofit Clinic for construction professionals (architects, general contractors and electrical contractors) and consumers. Our Retrofit Clinic site contains and offers the same product warranty/return policy as for all of our products. Whether deployed indoors, outdoors or underwater – all **LEDStorm** fixtures deliver the same quality, reliability, longevity, flexibility, ease of use and energy savings.

Visit our website for complete performance and technical data: www.LEDStorm.com

LEDStorm™ Commercial Lighting Solutions

The powerful, cost-saving, alternative lighting solution.

Save 50% - 85% or more in power & maintenance costs.



Retro Fit in Hallway



Retro Fit in Hallway



Additional Retro Fit Designs

Commercial Applications:

- Ceiling, Wall Retro Fit Kits for Kitchen, Living, bathroom fixtures.
- Cost Savings
- Burns cool
- Runs DC power so it is safer
- Control Temp, dimming, colors, on/off timer
- Control via Mobile Device/Wi-Fi
- Multiple form-factors, material fabrication, customized to suit customer's needs.

Residential Applications:

- Ceiling, Wall Retro Fit Kits for Kitchen, Living, bathroom fixtures.
- Cost Savings
- Burns cool
- Runs DC power so it is safer
- Control Temp, dimming, colors, on/off timer
- Control via Mobile Device/Wi-Fi
- Multiple form-factors, material fabrication, customized to suite customer's needs.

Street Applications:

- Acorn Retro Fit
- Cost savings here
- Average lifespan of product (maintenance)
- Installation

Visit our website for complete performance and technical data: www.LEDStorm.com

LEDStorm can create fixtures to replace, or retrofit, any conventional lighting source on the market today, saving its clients 50%-85%, and more, on power and maintenance cost. LEDStorm's designs are created with a "Platform" philosophy; our lighting instruments are built with "an eye on the future" (ie: intelligent grid, solar). LEDStorm offers infinite options (color temperature, light output, beam diameter) and control features (seamless dimming, color and color temperature change, power ramping, interactive sensors, and more). Our products can be as simple, or sophisticated, as you desire. In addition, to great savings, using our knowledge in film and television lighting, LEDStorm can actually improve the look of your environment.

LEDStorm, is a company that prides itself on versatility and simplicity. Despite our abilities to produce new sophisticated lighting systems, we are also capable of integrating our technologies by the most efficient means possible, into the existing systems, with little or no change to the current equipment. Our approach maintains the essence of what a true retrofit should be. With this approach, this allows us to create mechanisms and custom features that improve the performance of the lighting fixtures, or overcome specific environmental issues. Even though we can provide complete installation services, LEDStorm encourages the recycling of existing equipment, using established local businesses and the local utility companies, stimulating local employment.

All of LEDStorm's products, made in the USA, are manufactured and assembled at our ISO 9001 certified "Lead-free and "Green" plant, in Massachusetts.

The LEDStorm PL 6 Cobra Head Retrofit kit:

The PL 6 Cobra Head Retrofit is an universal 6"x6" LED panel designed to replace the HPS (High Pressure Sodium) bulbs in standard Cobra Head Style Street lights. With excellent versatility designed into our control boards, this amazing LED fixture can replace the lighting source in Cobra Head fixtures, utilizing the existing equipment, ranging from 100 watts to 400 watts. By utilizing the existing fixture and lens, the LEDStorm PL 6 Cobra Head retrofit can reproduce the required foot-candle output and pattern (based on existing IESNA standards for street lighting), using 50%-80% less energy.

The LEDStorm PL 11 Retrofit kit

The PL 11 Retrofit is an universal 11"x11" LED panel designed to replace bulbs in standard lighting fixtures ranging from 500 watts to 1000 watts. Foot-candle output and pattern can be easily produced to accommodate almost any application.

LEDStorm Fixture	Number of LEDs	Wattage of Fixture (Cobra Head/other) to be replaced	Wattage used by LEDStorm fixture (including max hot run wattage and power efficiency)	Energy saved (watts)
PL 6 Cobra Head Retrofit	16 (with Spot lenses)	100-250 watts	16-32 watts	84-218 watts
PL 6 Cobra Head Retrofit	18 (with Fresnel or Spot lenses)	100-250 watts	16-36 watts	112-214 watts
PL 6 Cobra Head Retrofit	24 (with Fresnel or Spot lenses)	250-400 watts	24-50 watts	226-350 watts
PL 11 Retrofit	60 (with Fresnel or Spot lenses)	500-1000 watts	60-125 watts	440-875watts

Table illustrates amount of Energy saved with replacement of HPS (or other standard) bulbs with LEDStorm LED systems (LEDs (3200K-5700K)).

The LEDStorm Acorn Retrofit kit:

The Acorn Retrofit is a universal fixture, with 6 independent LED panels, designed to replace the bulbs in almost any Acorn Style Street light. Utilizing the original pole, base and globe, this unique design, incorporating LEDStorm’s interchangeable lens system, with complete height and angle adjustment, allows this fixture to focus the spill and throw of light, anywhere (360°) around the fixture. These simple light control features, directing the light exactly where it is needed, reduces “skylight pollution” and improves the aesthetics of the overall environment. In addition, the LEDStorm Acorn retrofit is equipped with heat sensors to protect the fixture from over heating and is set up to add features as ambient light control, power ramping and more.

LEDStorm Fixture	Number of LEDS	Wattage of Fixture (Acorn-Head/other) to be replaced	Wattage used by LEDStorm fixture (including max hot run wattage and power efficiency)	Energy saved (watts)
Acorn Retrofit	12 (Fresnel or Spot lenses)	75-100 watts	12-25 watts	63-75 watts
Acorn Retrofit (demo unit)	18 (Fresnel or Spot lenses)	100-250 watts	18-42 watts	82-210 watts
Acorn Retrofit	30 (Fresnel or Spot)	250-400 watts	30-70 watts	220-330 watts

Table illustrates amount of Energy saved with replacement of HS (or other standard) bulbs with LEDStorm LED systems White LEDs (3200K-5700K). Output and Lensing is determined by the diffusion of the fixtures Globe.



LEDStorm™

LED  *Therapy*
Brochure

LEDTherapy

Advanced Light Therapy For The Home or Clinic.



LEDTherapy Kit



LEDTherapy Pads (6x6, 2x6, 3x3)



Controller Ballast

Adapting our unique array of hardware, firmware and software platforms, **LEDStorm** developed a system for healthcare providers which incorporates visible colors of the light spectrum with invisible, infrared colors.

Exposing the body to a combination of infrared (800 nm-1,000 nm wavelengths), visible colored light spectrum (780 nm-450 nm), and daylight (5,600 K), manipulated by various patterns and frequencies, using special flexible pads populated with specific LED sources, produced measurable therapeutic benefits.

Our particular “window of wavelengths” creates an electromagnetic field that we refer to as Modality and seems to stimulate human and other mammalian cellular activity.

As of October 2012, the **LEDtherapy/Modality** system has become available to the public and is currently being marketed.

Visit our website for complete performance and technical data: www.LEDStorm.com

**LEDTherapy****Advanced Light Therapy For The Home or Clinic.***LEDTherapy Pad Cable**Washable Velcro Neoprene Straps**Cigarette Lighter Adapter****Therapy Treatments Include:***

- Pins and Needles
- Lumbar Pain Deep Penetration
- Lumbar Pain Massage
- Lumbar Pain Icy/Hot Interval
- Lumbar Pain Icy/Hot 3 min Interval
- Arthritis Deep Penetration
- Tendinitis Massage
- Tendinitis Icy/Hot 3 min Interval
- Gout Massage
- Sprain/Contusion Deep Penetration
- Sprain/Contusion Icy/Hot 3 min Interval
- Open Wounds Pulse
- Open Wounds Pulse/Constant
- Acne/Cold Sores Cool Pulse
- Rehab Massage
- Rehab Icy/Hot 3 min Interval
- Post Op Pulse
- Post OP Pulse/Constant
- Warm Up
- Cool Down

LEDTherapy Kit Includes:

- 4 treatment pads (6x6, 2-2x6, 3x3)
- 3 treatment pad cables
- Controller ballast
- AC/DC power supply
- Cigarette lighter adapter
- 3 x Neoprene straps

LEDTherapy Kit - Retail: \$6,000**Visit our website for complete performance and technical data: www.LEDStorm.com**



LEDTherapy

Advanced Light Therapy For The Home or Clinic.

The LEDTherapy KIT is the first light therapy instrument (Polychromatic Infrared Modality) to incorporate a range of preset treatments that can be easily administered at the touch of a button. Each treatment pad incorporates a combination of Short and Long wavelength Infrared LEDs and colored LEDs (Red, Blue, Green, and Cool White) which specifically penetrate the body at different levels. Combined with the LEDTherapy ballast system's unique ability to engage these colors with various sequences and patterns (Pulse, Pulse/Hold, Massage, Icy/Hot), the therapies in our treatment menu specifically alleviate a whole array of ailments (Symptoms associated with Neuropathy, Lumbar Pain, Joint Pain, Open Wounds, Acne, Cold Sores, and more). Simply select one of the 20 treatments from the menu and the LEDTherapy ballast box will automatically, ramp up, gradually, to the appropriate treatment intensity level required. The treatment will then continue for the time required for the particular therapy selected, and automatically ramp down gradually after the treatment is complete. The LEDTherapy ballast can run 3 treatment pads simultaneously engaging the same treatment, or 3 independent treatments.

(NOTE: Also available are complete system installs for hospitals, clinics, etc. These large multiple unit systems can run several pads through wall outlets in several different rooms. These systems are equipped with wireless controls that can be run from an Ipad, or Iphone, application. Systems can be designed to meet any of the customer's requirements, or specifications.)

The LEDTherapy treatment pads are equipped with ultra efficient LEDs rated to last 20,000 hours during approved temperature and moisture conditions, and the color will not significantly change over the lifetime of the product. The LEDTherapy KIT uses less than 100 watts at 12 volts at full power. With its versatile power supply, the LEDTherapy kit can be used in any country (110 volt to 220 volt power) and, even in an automobile (12 volt).



LEDTherapy

Advanced Light Therapy For The Home or Clinic.

The LEDTherapy system with its 20 preprogrammed therapy, treatments, is based on the most recent research and data available to date.

Polychromatic Infrared Modality:

- Has been proven effective for wound healing, treatment and care of skin ulcers, diabetic neuropathy, arthritis, pain relief, inflammation, stimulation of the immune system and more.
- Safe to use-No heat or electrical charge emitted.
- No contraindications concerning implants, pacemakers or prosthesis.
- Treatments are “hands free,” and average only 12 minutes in duration, instead of other earlier systems that require “hands on” treatments of 45 minutes.
- Insurance and Medicare coverage for in-office therapy, rental and purchase of the product.
- NASA had been using Polychromatic LED light technology, aboard the space shuttle, to show simulation of the basic energy process in cells.



LEDTherapy

Advanced Light Therapy For The Home or Clinic.

HOW DOES LIGHT AFFECT THE BODY?

The light described above (blue < infrared), with the wavelengths specifically ranging from 400 to 1000 nm, are said to be a “window of wavelengths” that are able to more easily pass through tissue in the human body at varying levels.

The energy generated by this range of wavelengths excites cells, and immediately creates more ATP (cellular energy), which promotes increased DNA and RNA activity. Research indicates that the energy in this range is absorbed by a “specific proton pump, the CCO pump (Cytochrome C oxidase, “complex IV”) in the Mitochondria. Mitochondria, often described as “cellular power plants”, produce most of the cell’s supply of ATP. Mitochondria are also responsible for functions such as signaling, cellular differentiation, cell death, and control of the cell cycle and cell growth. The CCO pump, in a sense, is “jump started” and produces more cellular energy (ATP: Adenosine-5’-triphosphate- transports chemical energy within the cells). The increased ATP production increases respiration, and, via the Krebs cycle (“a series of enzyme-catalyzed chemical reactions” utilizing oxygen as part of cellular respiration), increases DNA and RNA activity. The increase in DNA, and RNA synthesis promotes the replacement of damaged cells. In turn, these effects lead to rapid creation of new tissue, increased circulation, and production of antioxidants.

Research has also suggested the appearance of an increased level of Nitric Oxide (NO) production. Nitric Oxide is vital as neurotransmitter (chemicals which allow transmission of signals from one neuron to the next across the synapses in the brain), muscle relaxer, anti-inflammatory, anti-viral/antibacterial, and pain reliever. The general process of these light wavelengths exciting cellular activity in the body leads to a vast array of medicinal benefits and scientific research too enormous to cover in such a brief presentation. For more in-depth and updated information and resources, regarding Light Therapy’s, Phototherapy’s, or Modality’s effects on the human body, there are a multitude of publications and websites.

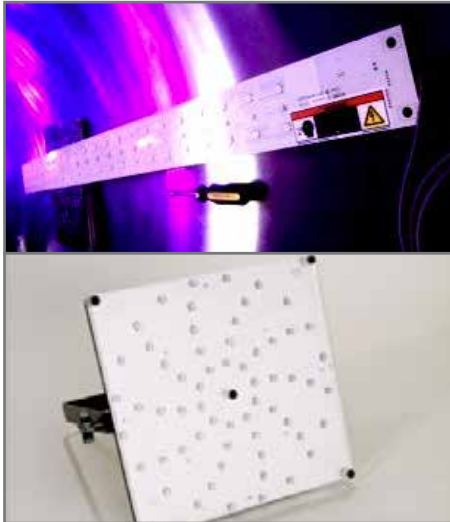


LEDStorm™

LEDGrow Lighting
Brochure

LEDStorm™ LED Biogrowth Lighting Solutions

Hydroponics Productivity can be Increased by more than 50% with our Grow Lighting Technology.



Custom Arrays of Growing LED Panels Are User-Optimized for Plants & Algae.



LEDStorm Touchscreen LCD Monitor



LEDStorm Grow Solutions adapt the same multi-wave length LED technology as our healthcare modality systems to achieve astounding increases in biomass. Developed at the request of algae producers seeking a practical, low-energy solution for very challenging grow lighting applications under water, LEDStorm Grow Solutions represent the most versatile, energy efficient, plant growth promotion system available.

Our commercially proven, user-friendly control system and multi-frequency, user-tunable LED fixtures allow greenhouse growers to adjust outputs to optimize production conditions and biomass increase for any plant species.

LEDStorm can meet all the lighting demands of any greenhouse, hydroponics, or algae production system (including 100% submerged applications). Energy savings are enormous (up to 900%) compared to conventional greenhouse lighting using HID lamps. This is our fastest growing and most lucrative market segment (see www.aquaterren.co.uk for more information on one of our most promising clients).

Visit our website for complete performance and technical data: www.LEDStorm.com



LEDStorm™

LEDStorm™
Accolades



C I N E V I D E O T E C H

www.cinevideotech.com

7330 N.E. 4th Court

Miami, FL 33138

Office **305.796.4212**

fax 305.759.2463



LEDStorm On-Camera light is in my opinion the most innovative lighting tool available today. You won't find in any other product on the market that does what this light is capable of. Between the adjustable color temperature, programmable effects generator, dimmable illumination intensity and lightweight design, the **LEDStorm** has an edge on the competition.

Speaking from a cinematographer's point of view I am excited to have this available to use to improve my capture of imagery in either film or digital. Speaking from an owner of a Motion Picture Rental House's point of view, this light and more products to follow from **LEDStorm** allows everyone a great opportunity to experience cutting edge Green Technologies in the entertainment business. I am happy to be a part of this future.

Thank you,
Egon Stephan Jr.

President/CEO of Cinevideotech Inc. IATSE 600 Director of Photography

“In today's race for lighter, more efficient and creative lighting sources, I've had the pleasure of using a certain must have, the **LEDStorm** On-Camera Light. While I was being introduced to the LS-711, during the production of a Music Video for Sir Ivan, “Kumbaya”, we immediately put it into practical use and it was the saving grace allowing us to creatively express the scene. I hope to see a lot more features and many other advancements from **LEDStorm**.”

Alfeo Dixon | Cinematographer for Cine & Print Photography <http://www.alfeo.com/>

This past New Years Eve , I was the Camera First assistant on a Jamie Foxx music video in Miami. The caveats were very challenging given that everything was run-and-gun (hand held Arri 235 with Dolphin mags, Cooke Primes and an on-board monitor), no set-ups, all available light, use only what you can carry, and no location support in the biggest party of the year commencing at P. Diddy's event at one of South Beach's hottest nightclubs. We knew we were "on our own" with no plug-in light capability for 14+ hours in sardine-packed chaos. The **LEDStorm** On-Camera light was the surprise factor on the shoot with amazing versatility of color temperature, dimmable illumination combined with ultra light weight and a small footprint. I doubt any other tow-along light would have outlasted our Anton Bauer battery belt for the entire event. The **LEDStorm** program settings are intuitive and simple to learn giving this first use experience a large relief. Photographically, the illumination looks seamless from the environment or conversely can be very stylized, making this a fantastic tool that I will certainly add to all my future camera orders.

Brett Frey | IATSE Local 600 Camera Assistant since 1992

I recently had a chance to use two **LEDStorm** Systems (PL-11 Panels & The FlexiLED Kit) on the TV Series "Gravity". Throughout the shoot, I knew there were many lighting effects that the script called for, and, with a full schedule of ten or more pages a day, we had to move quickly.

There seemed to be no limitations with these lights. We used them as a TV light effect, fire effect, police car light, eye light, interior car light, day and night. Being able to adjust the color temperature (2800K – 6800K) and dial colors, in or out, without having to change bulbs or gels, was enormous time saver. The control box allowed the operator to choose a variety of different effects simply by scrolling through a window menu.

I really enjoyed having **LEDStorm's** systems as part of the lighting package.

Thank you!

Eric Boncher | Gaffer, New York Television Series: Gravity

LEDStorm™ Shines Across Range

LEDStorm offers a range of LED-based lighting solutions, including the LS-711 on-camera light ring, the PL-11 Panel Light and the FlexiLED system.



Incorporating bulbs with a 130-degree angle, the LS-711 is primarily used as a beauty fill light, and it allows cinematographers to shoot with even their widest lenses. The fixture is also ideal for shooting hand-held without ever feeling “sourcey,” and with its ability to utilize different parabolic lens attachments, the LS-711’s beam angle can range from 130 degrees all the way down to 5 degrees; at the spot end, the LS-711 increases its intensity by 5 stops and offers a throw of 50’.

The PL-11 also incorporates bulbs with a 130-degree angle and utilizes a system of parabolic lens attachments, allowing the PL-11 to be four different fixtures in one: a wide fill source, a hard spot source, a softer spot source and a medium source. With the hard spot lens, the PL-11 creates a 50’ throw.

LEDStorm’s newest addition to its line is the FlexiLED system, which possesses all the same operating features as the LS-711 and PL-11 packaged in paper-thin fixtures that can be taped or pinned just about anywhere; the fixtures can also flex around nearly any object. The FlexiLED kit comes with four different sizes of fixture: 6”x6”, 3”x3”, 2”x6” and 2”x4”. The ballast can operate three fixtures at once and allows independent control of each. The ballast can be run off an automobile cigarette lighter, and the kit includes an AC power brick and adapters for a variety of different DC options. **LEDStorm** fixtures incorporate an array of bulbs and a multi-point calibration technique to offer a color-temperature range between 6800°K and 2800°K, in ten-degree increments. All **LEDStorm** fixtures are backed by a lifetime guarantee and are manufactured in a green-friendly, lead-free facility in Massachusetts.