



LEDStorm™

Film & Video

Brochure

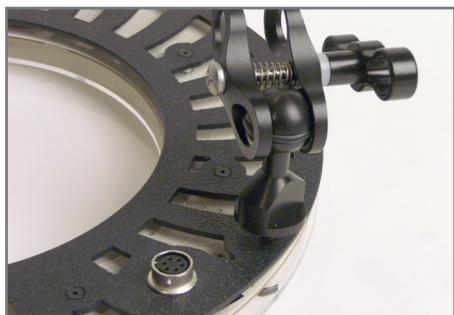
LEDStorm™ LS-711 & LS-69

On-Camera Ring Light (18-36volt) & (12volt).

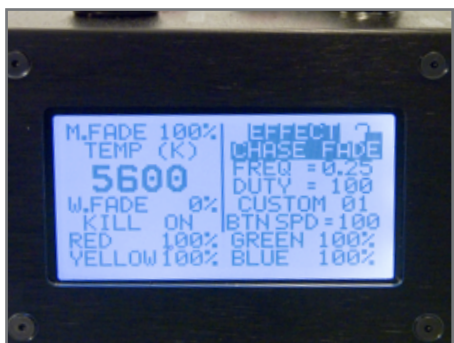
The LS-711 & LS-69 LEDStorm™ On-Camera Lights are the perfect solutions for all “run and gun” camera work.



LS-711 On-Camera Ring Light



Ring Light Camera Mount



B-24 Control Ballast

The LS-711, **LEDStorm** On-Camera Light, with its 7” inner diameter and 11” outer diameter, utilizes diodes with a 130° angle, which creates a more natural, wider spread of light allowing cinematographers, with no vignette, to shoot with their widest lenses.

Utilizing the versatile 10-piece Ultra Light bracket system, The LS-711 can be oriented anywhere on any camera system the operator desires. With its unique parabolic lens system, the LS-711 can also deliver surprisingly powerful output. Which allows the cinematographer the ability to shoot in full sun, with a throw up to 100 feet.

Multi-function Control Box:

- LCD Display
- Can Produce any White Light Color Temperature
- Can Produce any Color in the Light Spectrum (RGBY)
- Total Frequency and Duty Cycle Control
- Seamless Dimming and Color Temperature Ramping
- Duration Control
- Manual Master Fader
- Kill Switch
- Daisy Chain

Visit our website for complete performance and technical data: www.LEDStorm.com

LEDStorm™ LS-711 & LS-69

On-Camera Ring Light (18-36volt) & (12volt).

The LS-711 & LS-69 LEDStorm™ On-Camera Lights are the perfect solutions for all “run and gun” camera work.

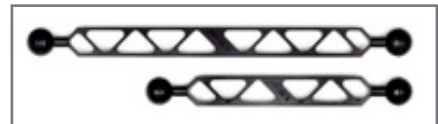


LS-711 Kit

Multi-function Control Box Continued:

- Preprogrammed Effects: Strobe, Chase Fade, Chase Jump, Old and New Style Police Lights, Firetruck, and Ambulance, Fire, Water, and Television
- Open Custom Channels allows the user to save custom settings
- Universal AC power input (110v-220v)
- 18-36 VDC Battery operation (8 hours or more with most 30v battery systems)

LS-711 Kit Includes:



- | | |
|---|---|
| <ul style="list-style-type: none"> • LS-711 On-Camera Light (11” Outer Diameter & 7” Inner Diameter) • B24 Control Ballast (6”X 4” X 2) • Battery Belt Power Cable (Fits Most 30/13V Battery Belts) • (2 Pin LC30 or 3 Pin XLR to Female 4 Pin XLR) | <ul style="list-style-type: none"> • AC-DC Power Brick W/Cables, 24volt, 120 Watts (Edison T0 Female 4Pin XLR) • 10 Piece Ultralight Bracket System • 3 Piece Lens System • Pelican 1560 Carry Case • Kits Weight 18-20 lbs Depending On The Accessories |
|---|---|

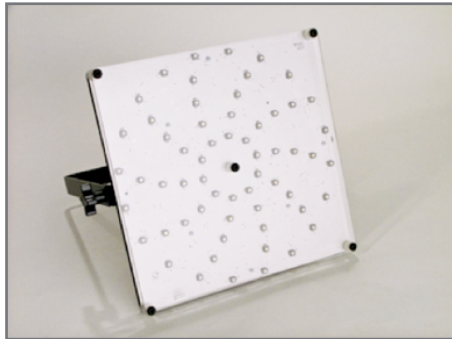
LS-711 Retail: \$4,600

LS-69 (12v) Mini Ring Light also available - **Retail: \$3,600**
(Includes the same accessories as the LS-711)

Visit our website for complete performance and technical data: www.LEDStorm.com

LEDStorm™ PL-11 & PL-6

Hand Held or Fixed (18-36volt) & (12volt).



PL-11

LEDStorm Panel Light, an 12" by 12" square panel, utilizing bulbs with a 130° angle, arranged in a unique spiral formation, allows cinematographers to shoot with their widest lenses. PL-11 is ideal as a "floating hand held light without feeling "sourcey". With its interchangeable parabolic lens system the PL-11 can range from 130° all the way down to 5°, increasing its intensity by 5 full stops and its throw up to 75 feet.



B-24 Control Ballast

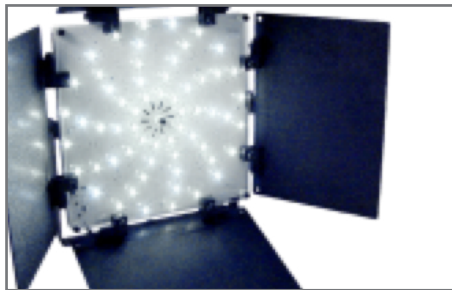
Multi-function B-24 Control Ballast:

- LCD Display
- Can Produce any White Light Color Temperature
- Can Produce any Color in the Light Spectrum (RGBY)
- Total Frequency and Duty Cycle Control
- Seamless Dimming and Color Temperature Ramping
- Duration Control
- Manual Master Fader
- Kill Switch
- Daisy Chain
- Preprogrammed Effects: Strobe, Chase Fade, Chase Jump, Old and New Style Police Lights, Firetruck, and Ambulance, Fire, Water, and Television
- Open Custom Channels allows the user to save custom settings
- Universal AC power input (110v-220v)
- 18-36 VDC Battery operation (8 hours or more with most 30v battery systems)

Visit our website for complete performance and technical data: www.LEDStorm.com

LEDStorm™ PL-11 & PL-6

Hand Held or Fixed (18-36volt) & (12volt).



PL-11 with Barn Doors

PL-11 & PL-6 Kits Include:

- Fixture (with Yoke and Bail Block)
- 3 Piece lens set
- AC to DC power supply
- Battery cable
- Pelican 1560 carry case
- B-24 Control Ballast (6"X 4" X 2)

PL-11 & PL-6 Separate Accessories:

- Barn Doors (Set of 4)
- Header cables (10', 25' 50')
- Header cable jumper Female to Female.

PL-11 (12"x12") Retail: \$4,400

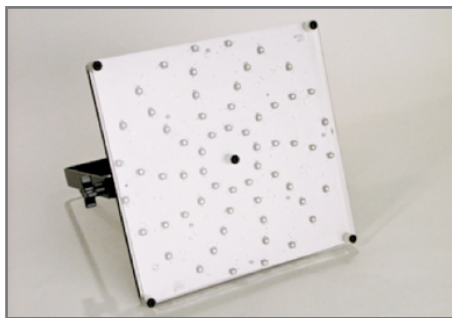
PL-6 12volt (6"x6") Panel Light also available - Retail: \$3,400
(Includes the same accessories as the PL-11)

Visit our website for complete performance and technical data: www.LEDStorm.com

LEDStorm™ PL-11 PAR (12"X12") & PL-6 PAR (6"x6") **Hand Held or Fixed (18-36volt)**



PL-11 PAR - with Barn Doors



PL-11 PAR

The PL-11 Par, **LEDStorm** 12"x12" Panel Light, is all about power. With less than 120 watts the PL-11 Par can rival most 1200 watt incandescent fixtures and 400-800 watt HMI fixtures, which has earned it the nickname "Master Blaster".

Light weight and superior battery operation makes the PL-11 Par an excellent "floating" hand held source.

PL-11 PAR & PL-6 PAR Kits Include:

- Fixture (with Yoke and Bail Block)
- 3 Piece lens set
- AC to DC power supply
- Battery cable
- Pelican 1560 carry case
- In-line Dimmer w/25' header cable

PL-11 PAR & PL-6 PAR Separate Accessories:

- Barn Doors (Set of 4)
- In-line Dimmer
- Header cables (10', 25' 50')
- Header cable jumper Female to Female.

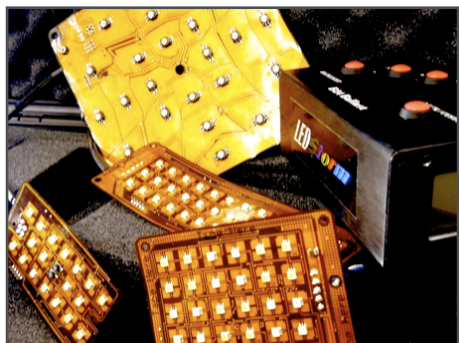
PL-11 PAR 18-36volt (12"x12") Retail: \$2,250

PL-6 PAR 12v (6"x6") also available - Retail: \$1,700
(Includes the same accessories as the PL-11 PAR)

Visit our website for complete performance and technical data: www.LEDStorm.com

LEDStorm™ FlexiLED kit (9-18volt)

A powerful, Flexible and Portable Lighting Solution



FlexiLED Kit



Control Box

The FlexiLED kit includes 4 lightweight flexible fixtures that can be taped or pinned to just about any surface. Up to 3 fixtures can be run on a single ballast (12V cigarette car lighter), and have all the functions and effects that you have become familiar with in our other products.

However, with the FlexiLED system, these fixtures can simultaneously perform independent functions out of the same ballast. The FlexiLED kit is ideal for car rigging, tabletop, or just hiding light sources in those impossible small spaces.

The Kit includes:

- 4 Fixtures
6"x6" panel , 3"x3" panel , 2"x6" strip,
and 2"x4" strip
- 12VDC (9-18volt) Ballast,
- Control cables for all 4 fixtures
- AC power brick (110v/220v)
- Battery cable (LC30 to 4 pin XLR, or
your choice of pin-out)
- Male cigarette lighter adapter to female
4 pin XLR
- 25' Male 4 pin XLR to female 4 pin
XLR extension cable
- Male Cigarette lighter Adapter to fe-
male "Y" splitter adapter
- 25' Car Battery clips/jumpers to female
Cigarette lighter adapter

FlexiLED Kit Retail: \$5,000

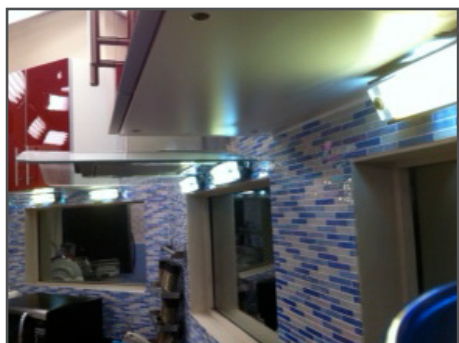
Visit our website for complete performance and technical data: www.LEDStorm.com

LEDStorm™ Mini Source **(5600K Daylight)**

A powerful and Portable Lighting Solution



FlexiLED Kit



Mini Source lights used on the set of the reality show Protagonista.

LEDStorm Mini Source is the smallest fixture of the Master Blaster series is a very compact, lightweight fixture (size of a harmonica) with a remarkable throw and output. This small fixture (6"x1.5") is the ideal on camera light source. Using less than 10 watts can be plugged right into your camera's P-tap; can also be run on ac power, or other battery sources (battery belt). Just as our other products, the **LEDStorm Mini-Source** uses an interchangeable lens system that allows the fixture to be used in many different ways.

Mini Source Kit Includes:

- Fixture (12v, 5-10watts): w/lenses (5°, 30°) Tail with Female connector
- 10 watts 12volt AC/DC Edison to Male connector 10'-12' ft cable
- 6' male connector to Male P-Tap connector In-line dimmer w/power switch (input female output female)
- Male to Male turnaround
- Ultralight Adapter male 1/4" (AD-1420 w/Stud), Hot Shoe Adapter(AD-HS), 1-Knuckles (AC-CS)
- Carry Case (IM2100 Storm Case)

LEDStorm Mini Source Kit: \$775

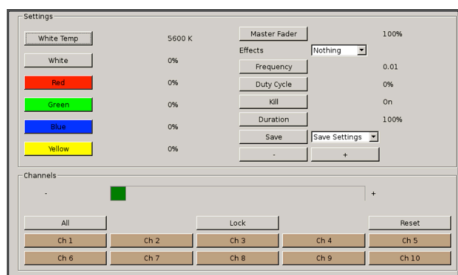
*Visit our website for complete performance and technical data: **www.LEDStorm.com***

LEDStorm™ New Arrivals

A quick introduction to some new products.



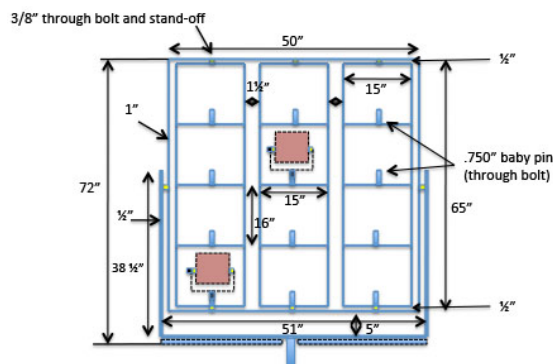
Instant Studio Control Ballast



LEDStorm Touchscreen LCD Monitor

The LEDStorm Instant Studio System: is ideal for studio lighting set ups in any location. The multi-control ballast system, can be plugged into any household 110v (110v-240v (20amp)) power outlet and can operate multiple **LEDStorm** fixtures (24vdc). **LEDStorm's** superior control system, operated locally or by remote (wireless), can control all the fixtures simultaneously, individually, or any number of selected fixtures the operator desires.

*The **LED**Storm Instant Studio System is Currently in operation at ESPN Headquarters, The Campus Bristol, CT.*



LEDbrut Frame

The LEDStorm LEDbrut: is an extremely versatile lighting fixture. The **LEDStorm LEDBrut**, utilizing the PL11 Par (Master Blaster) fixtures, with a fraction of the power requirements, makes an excellent lightweight alternative to the traditional 12 Light Maxi-Brute fixture. The **LEDStorm LEDBrut** will only use a maximum of 2000 watts as opposed to the 12,000 watts used by the 12 Light Maxi-Brut. This system can also be easily adapted into a studio set-up . The multi-control ballast system, can be plugged into any household 110v (110v-240v (20amp)) power outlet and can operate up to 12 PL-11/PL-6 (panel) fixtures (24vdc). Uses the same controller as the **LEDStorm Instant Studio System**.